

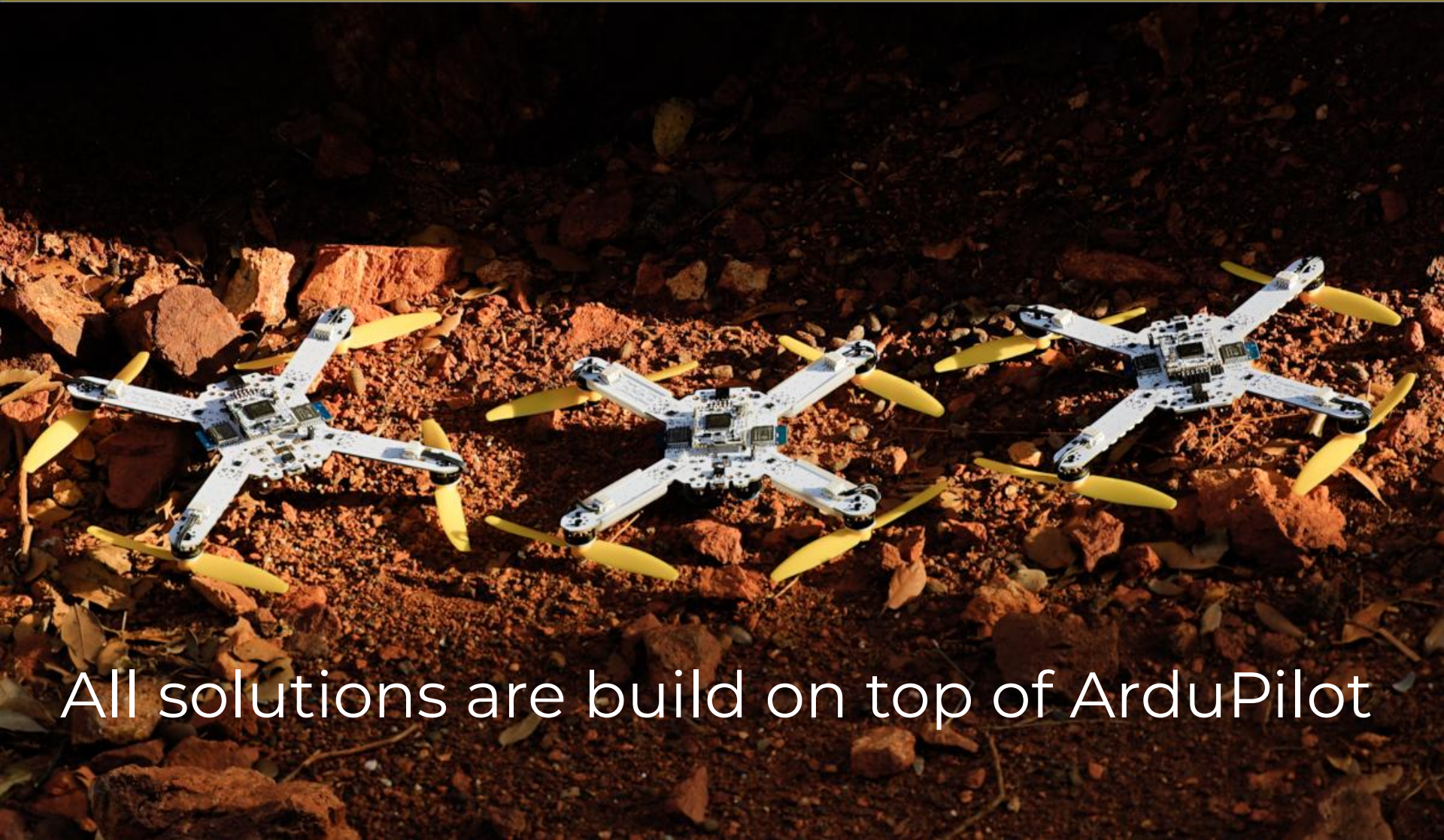
Swarm, Light Show, ArduBee

Giorgio Rinolfi, R&D Creative Director

Guglielmo Cassinelli, Software Developer



Aerial Media Arts



All solutions are build on top of ArduPilot

Aerial data visualization

DEEP Music on Air

ARTECH 2019

9th International Conference on
Digital and Interactive Arts Braga,
Portugal

Massimiliano Zanoni, Michele Buccoli,
Guglielmo Cassinelli, and Giorgio Rinolfi.
2019. **Deep music on air**. In *Proceedings
of the 9th International Conference on
Digital and Interactive Arts (ARTECH
2019)*. Association for Computing
Machinery, New York, NY, USA, Article 90,
1–4.

<https://doi.org/10.1145/3359852.3359970>



neuron activity level transfers to color range



2014 the beginning



2016 -2017

Early prototypes

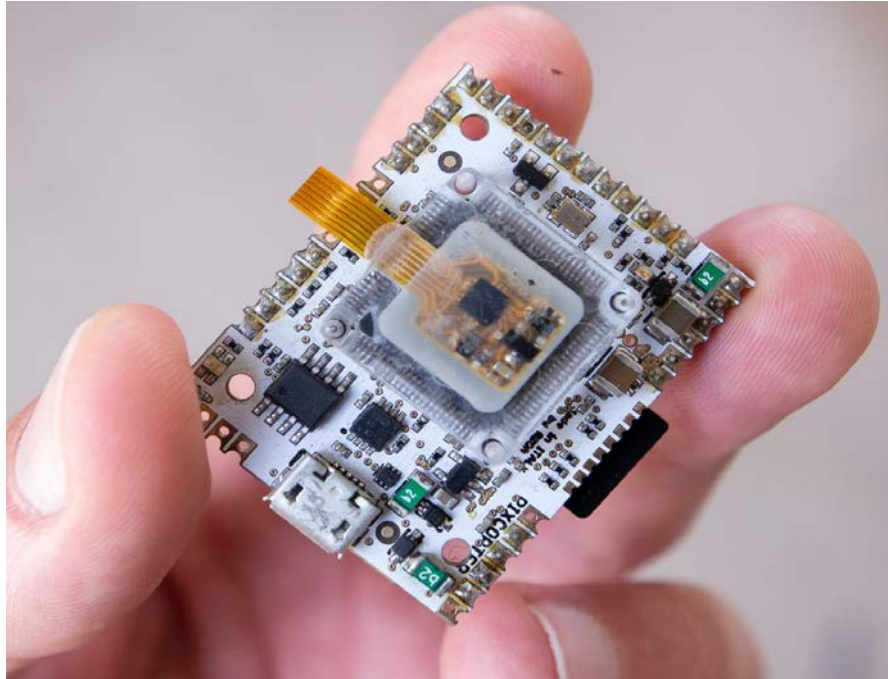


169 independent LEDs



External Pixracer, external compass

2018 plug-in FC



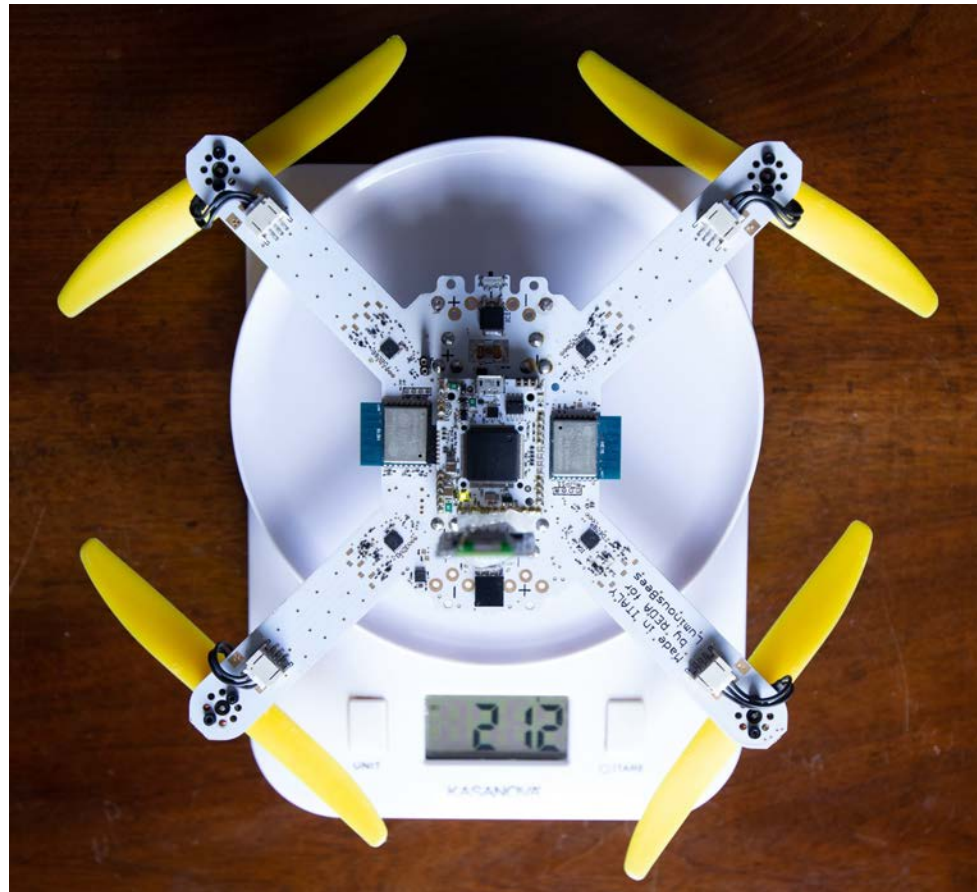
F4 MCU

second IMU
dampened

SD card slot



LuminousBee4



Our best 5"

Flying PCB



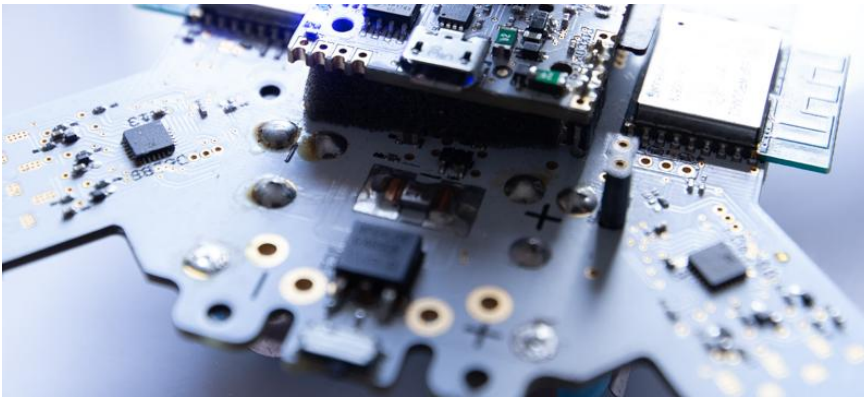
One single piece of electronic



Only the motor cables survive

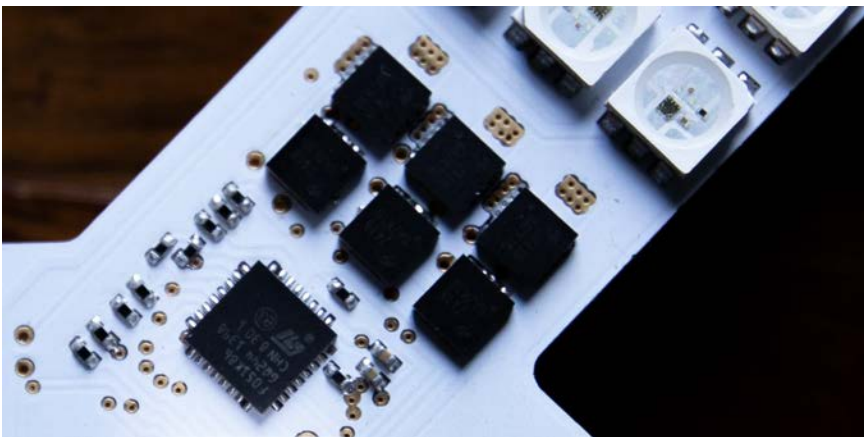
Ardupilot BIHeli32

Integrated ESC



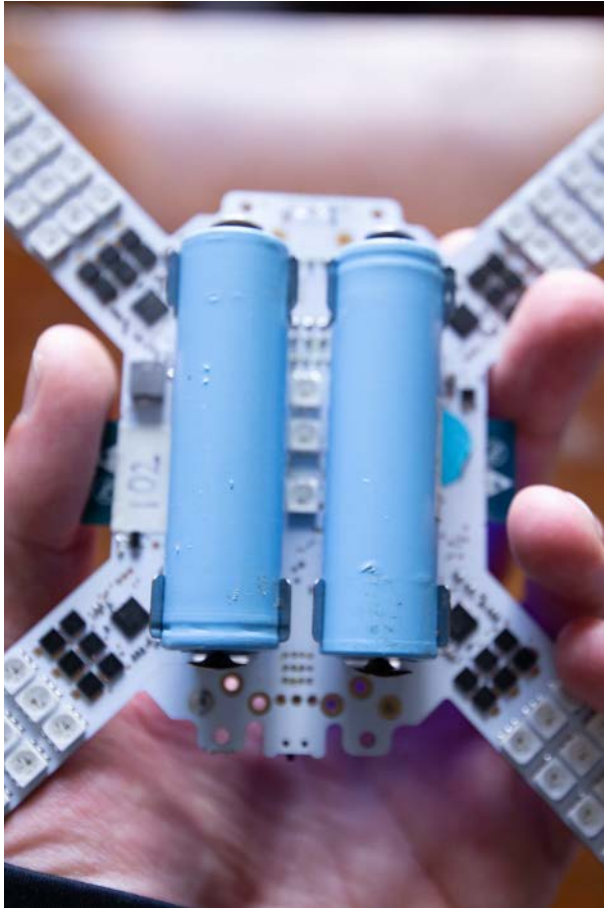
BIHeli32 with
telemetry

- RPM
- Current



DSHOT up to 1200
DSHOT 2400 HW

Hovering time



Lightweight
=
great endurance

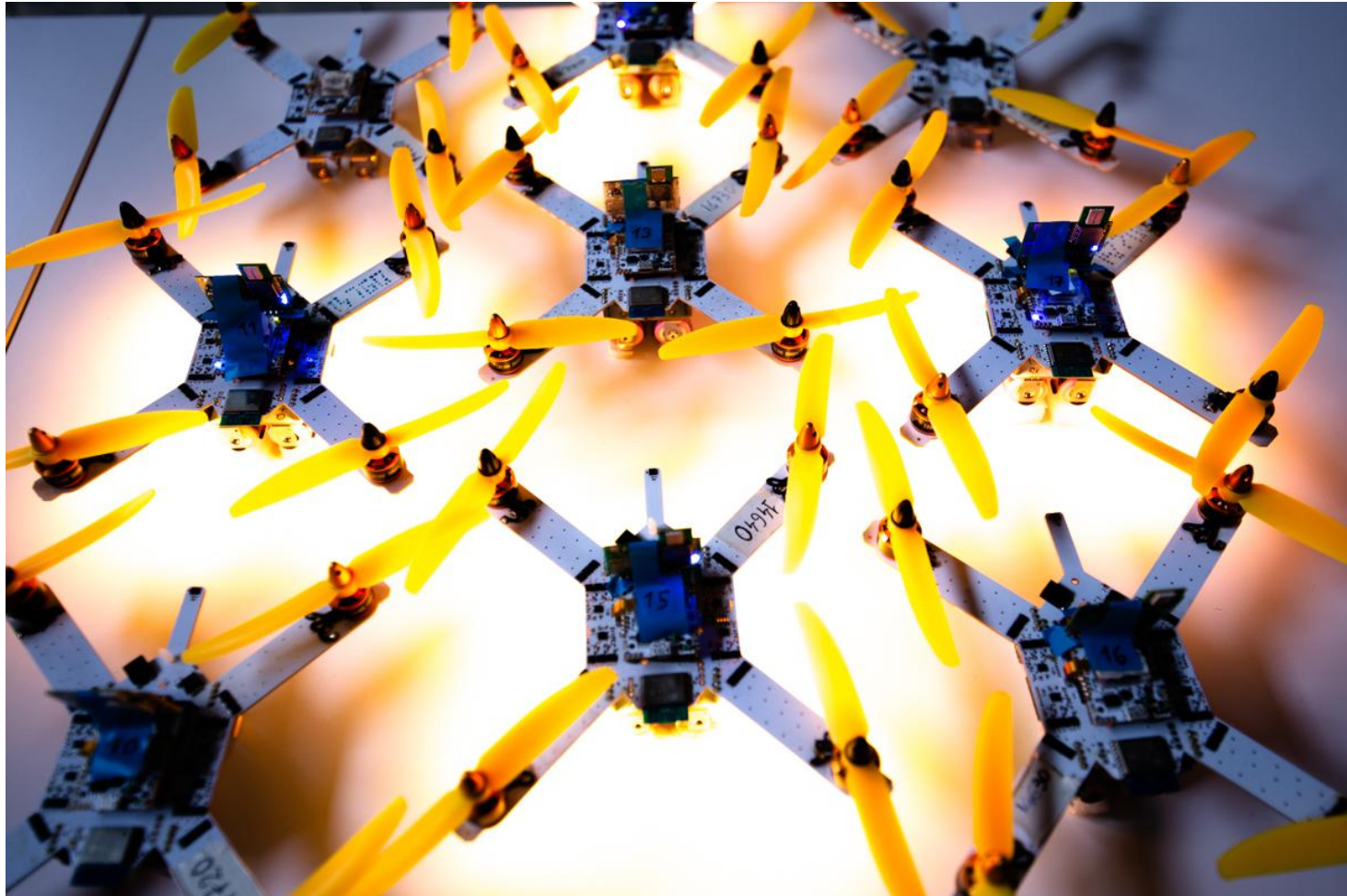
2 x 18650 3600mAh

45 min

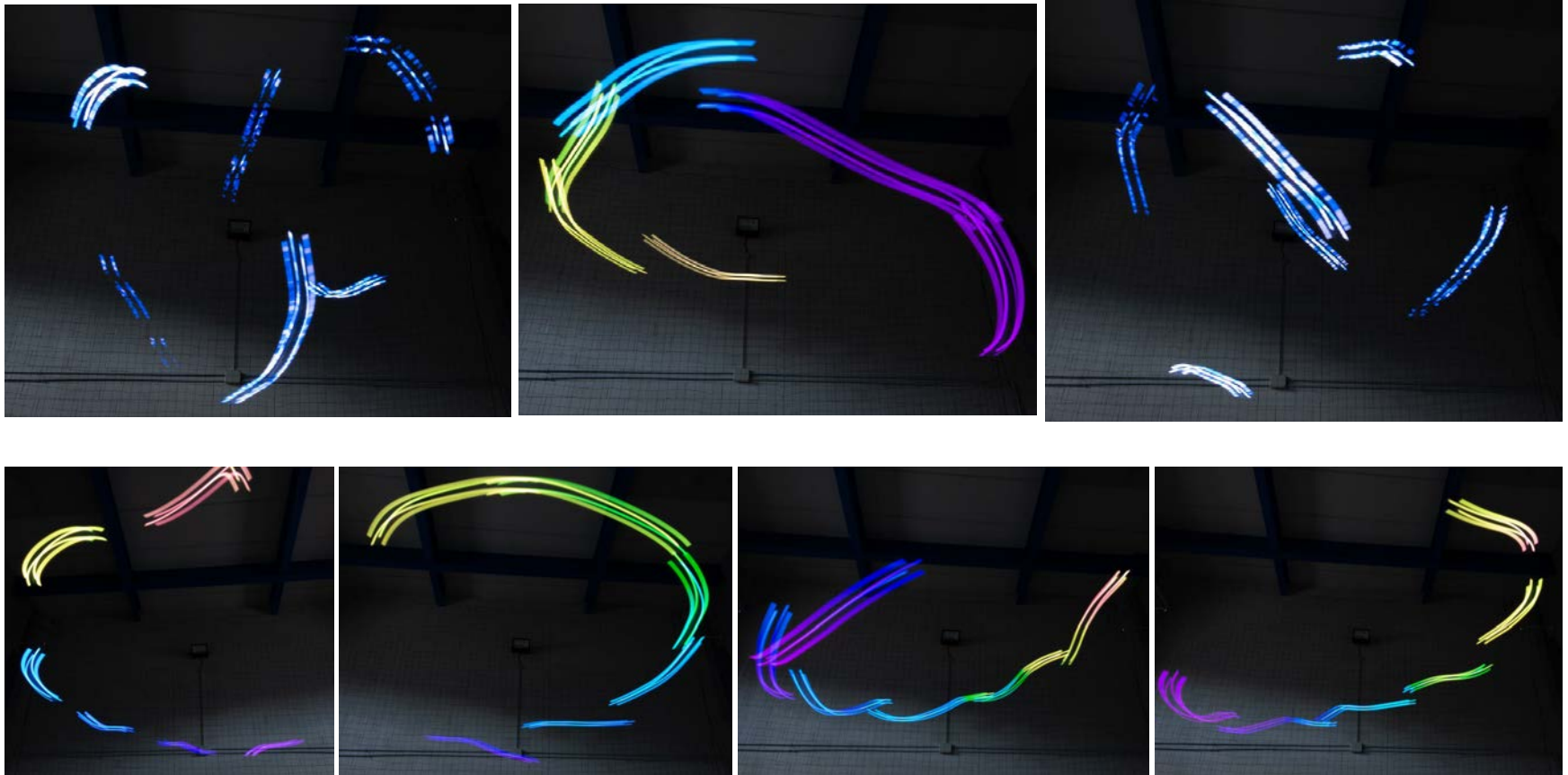
2 x 21700 5000mAh

more than 1h

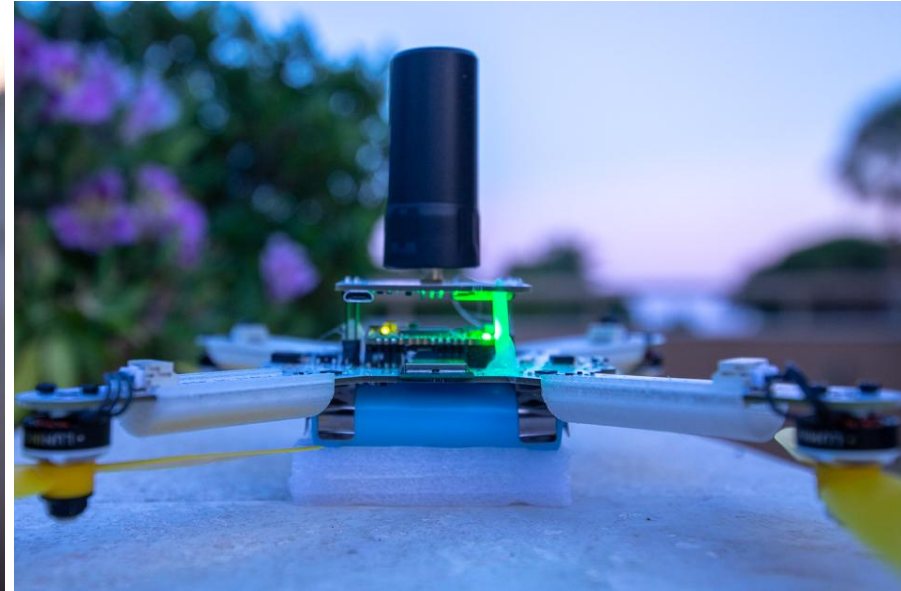
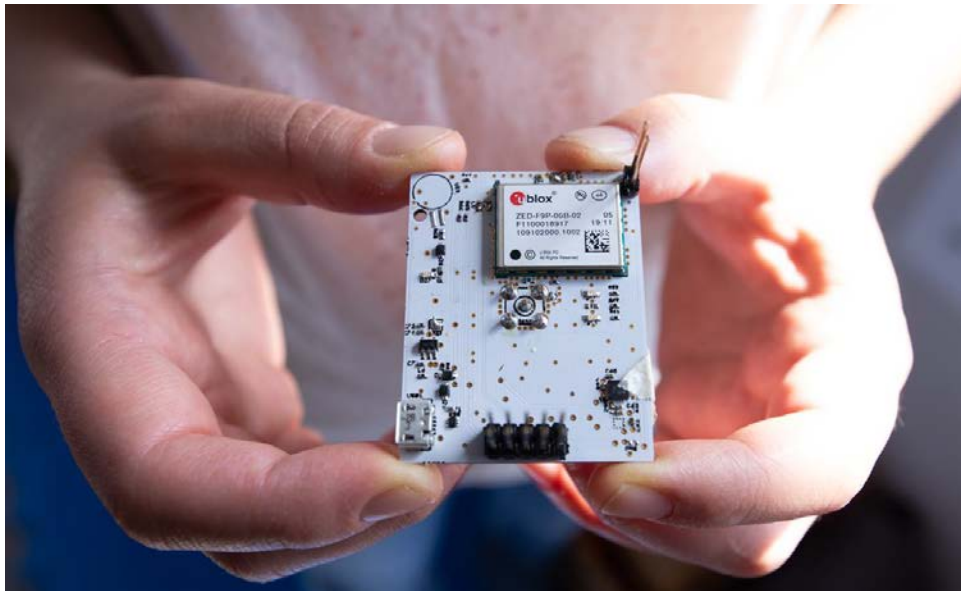
2018 First LB Swarm



63 independent LEDs

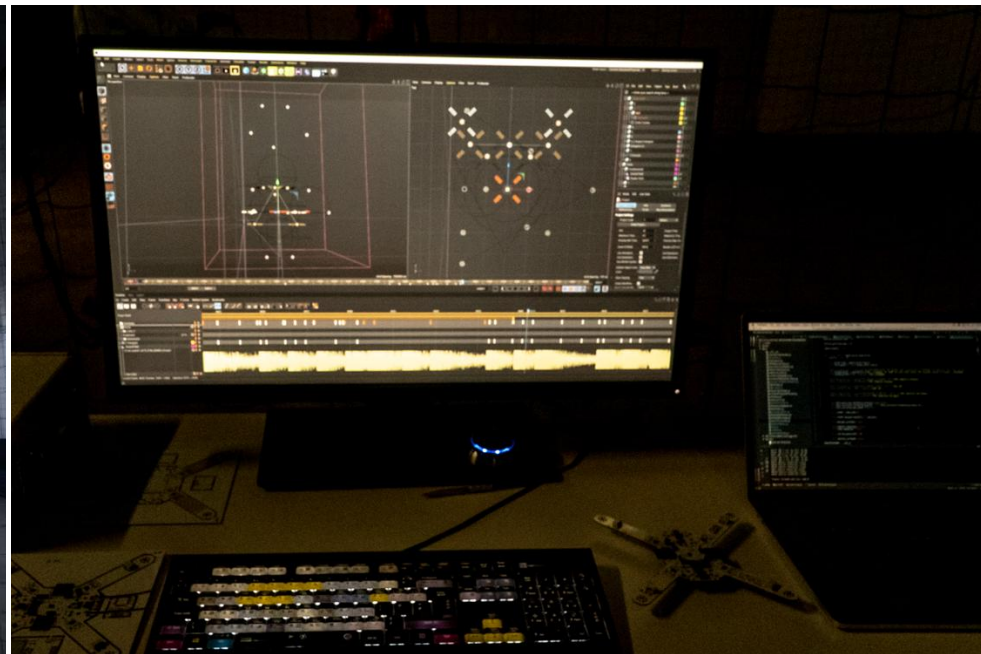
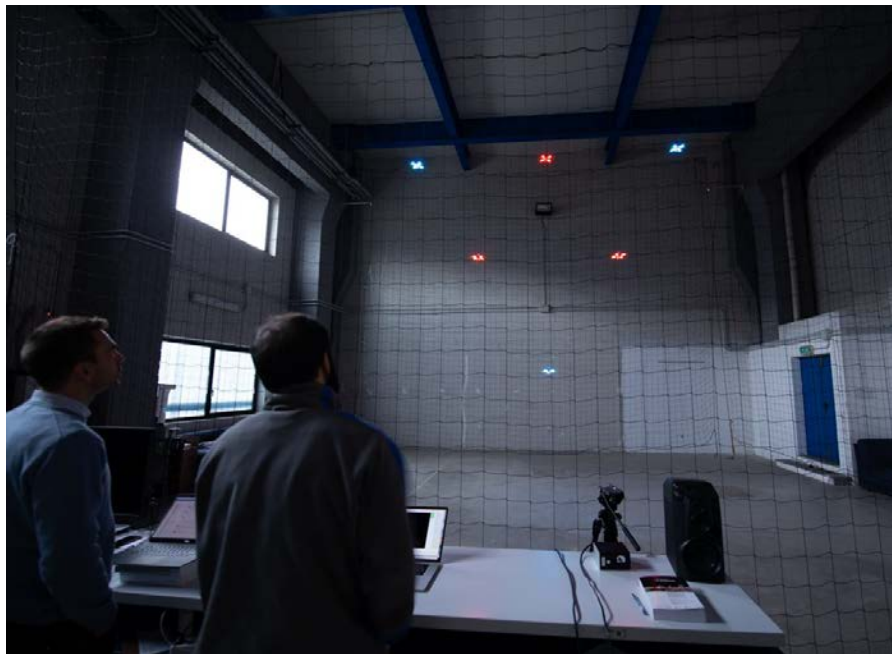


AP Ublox F9 support

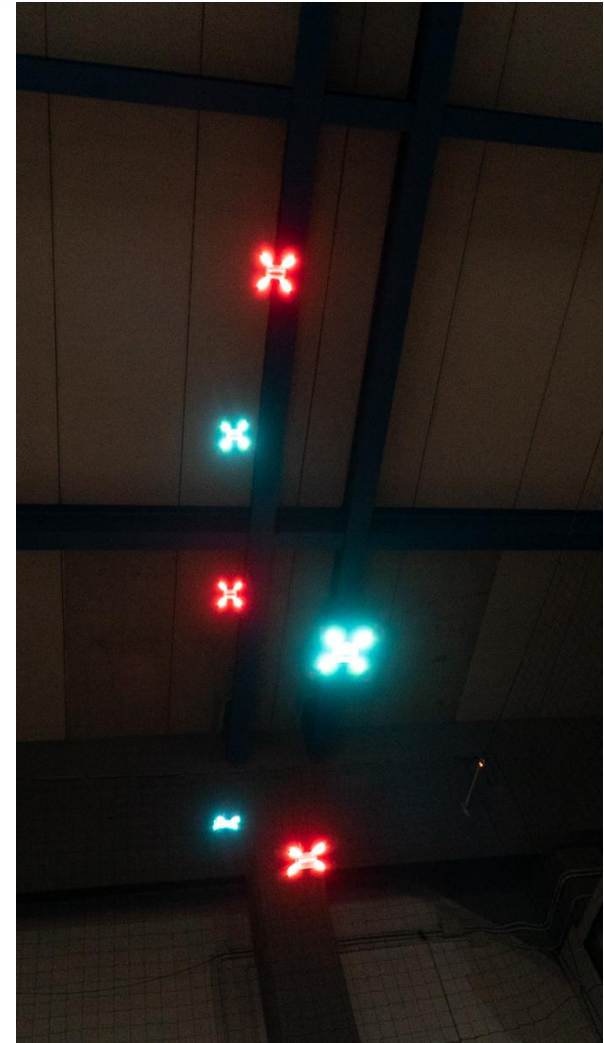
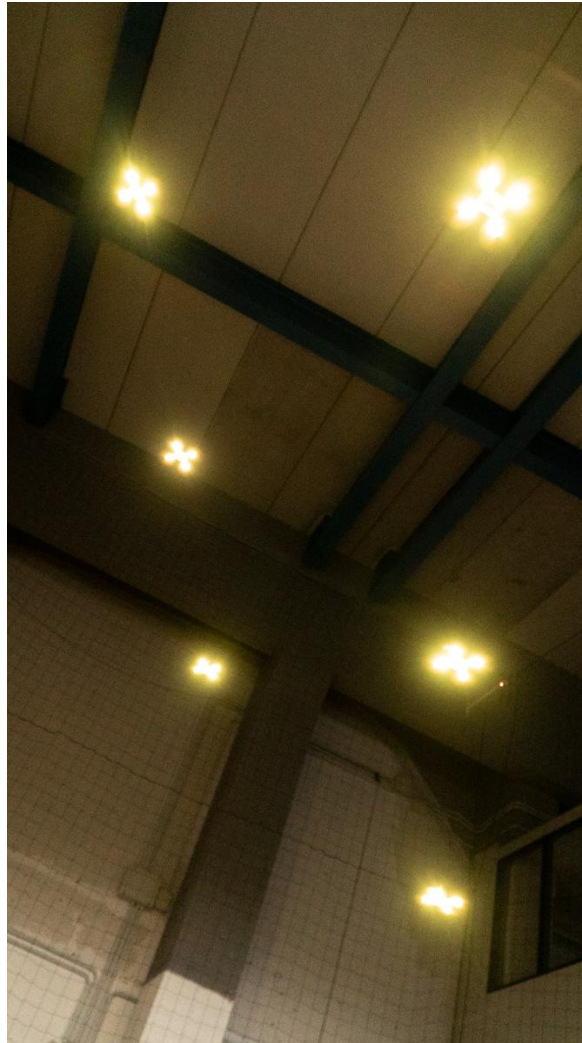
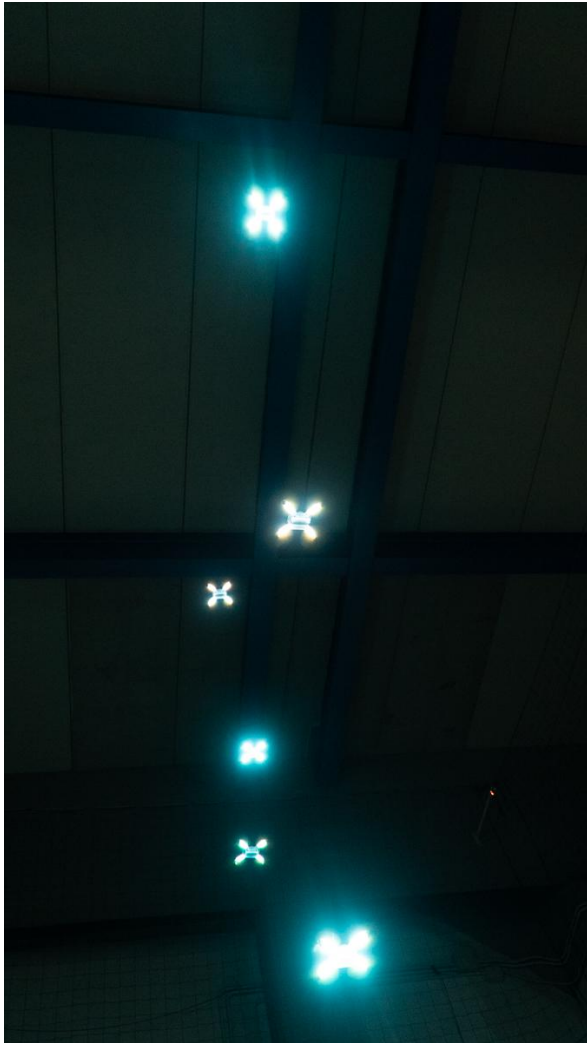


May 2019
Outdoor positioning

Animation Design



Indoor testing

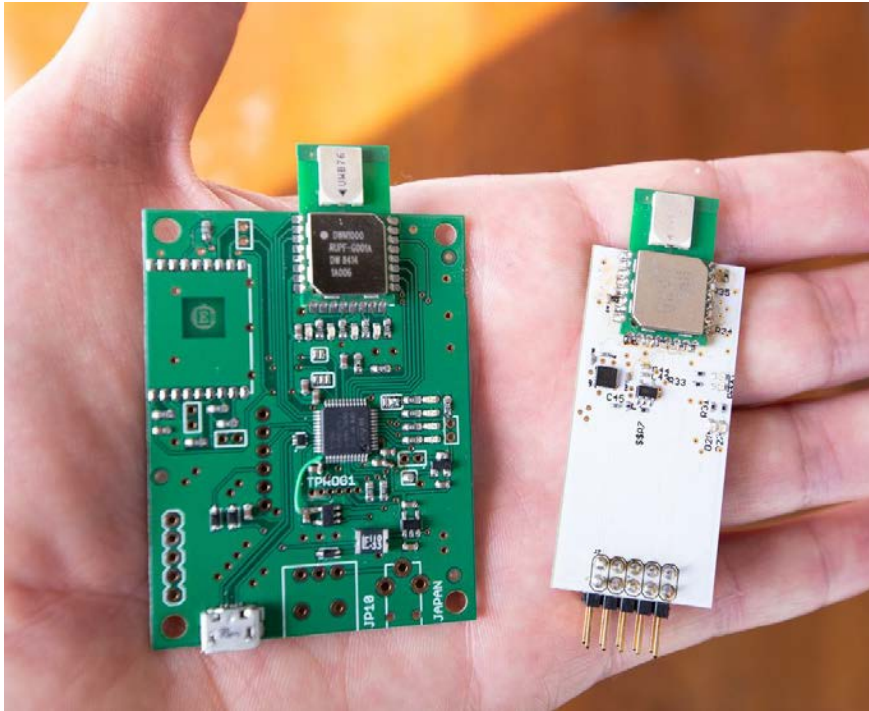


Storytelling with LB swarm

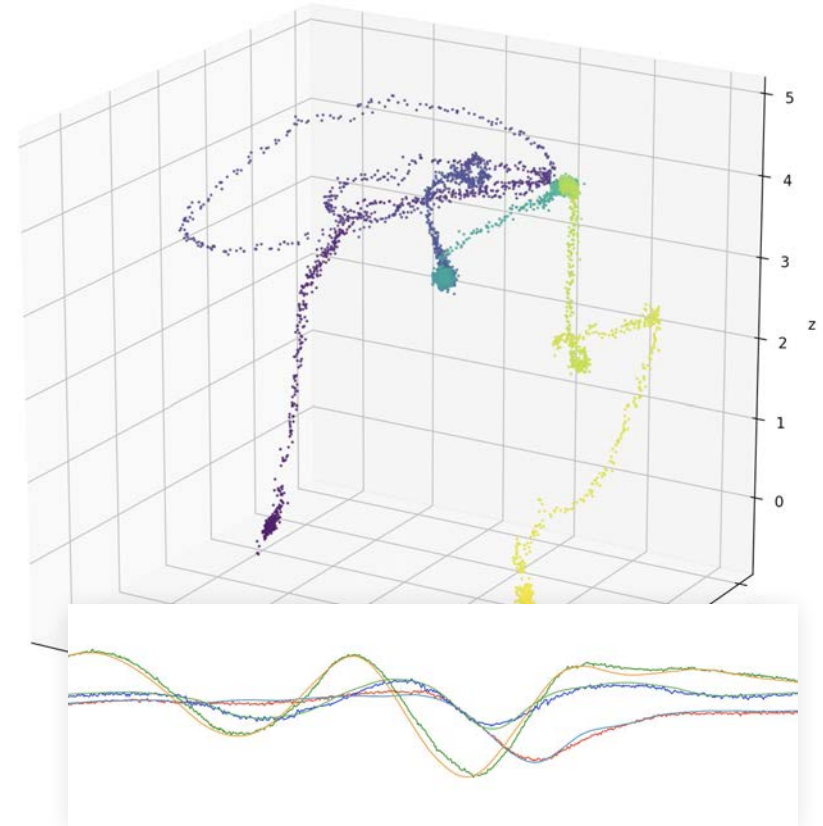
Christmas is in the Air



UWB localization for Swarm



beacon and tag with
external compass



positioning error < 5cm

Thank you ArduPilot!



Hwdef = easy setup for HW development

CompassPerMotor for small drones

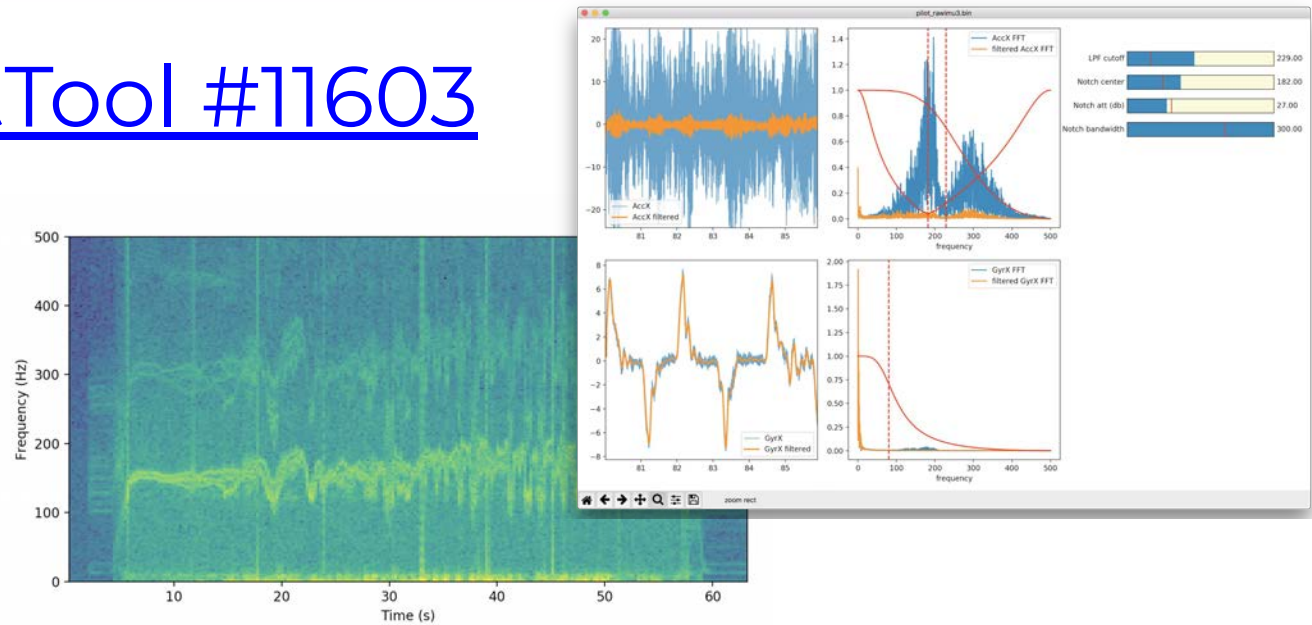
Harmonic Notch Filter

Neopixel integration with Lua scripting

And much more...

Contributions

FilterTestTool #11603



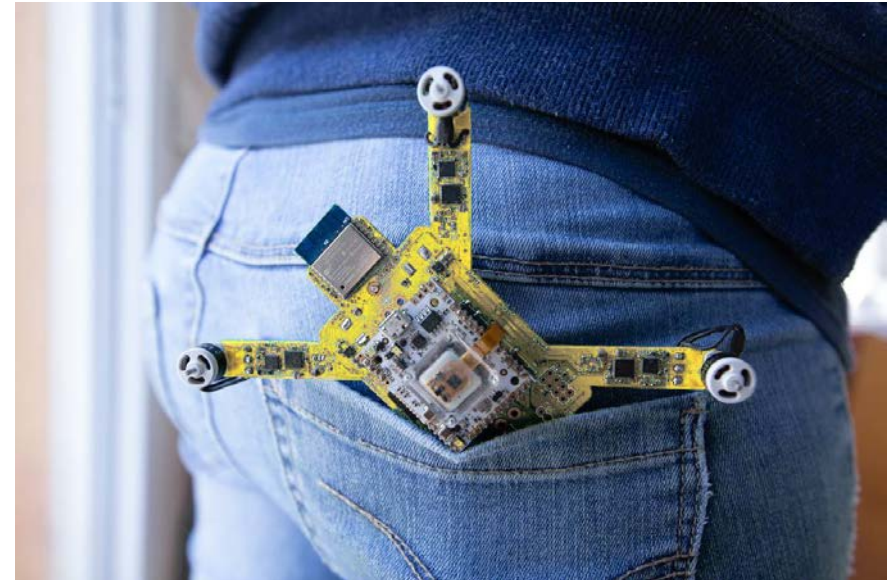
Other minor contributions:
waypoint radius min, SITL on MacOS bugfix,
Accel notch filter, beta testing...

A tiny ArduPilot platform

ARDUBEE <>

Ready for everyone:

- Education
- Research
- Advanced DIY
- Fun
- Develop with ArduCopter



ARDUBEE < >

3" ArduCopter

ARDUPILOT
Versatile, Trusted, Open

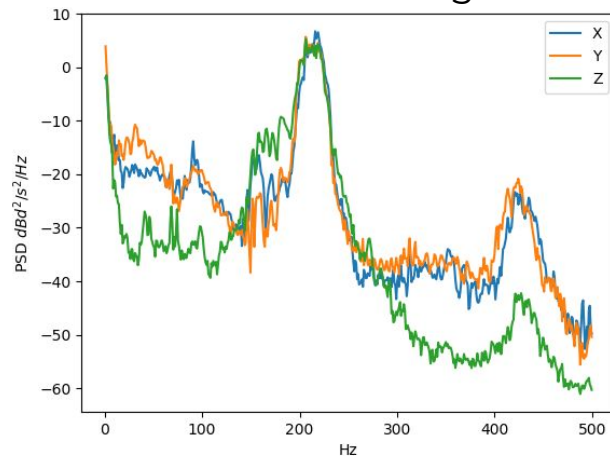


without and with battery

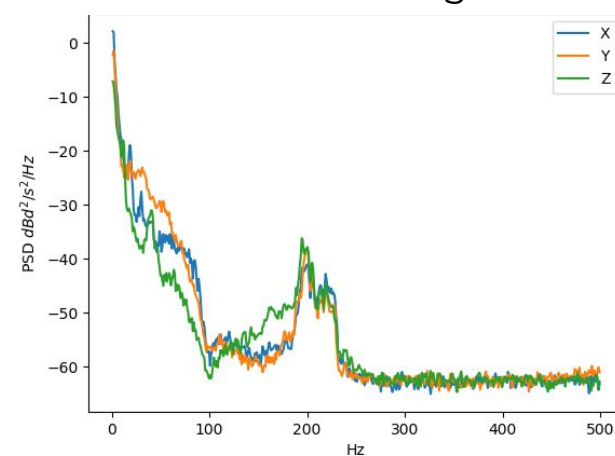
INS_HNTCH_ Harmonic Notch Filter



Pre filtering



Post filtering





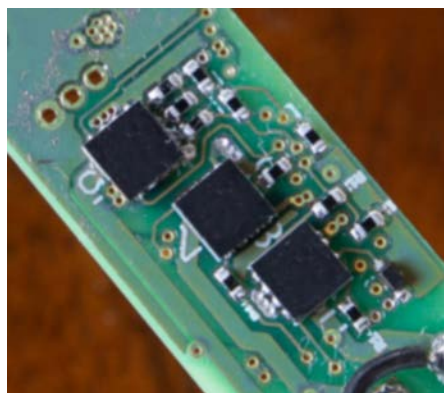
Deep integrated electronics



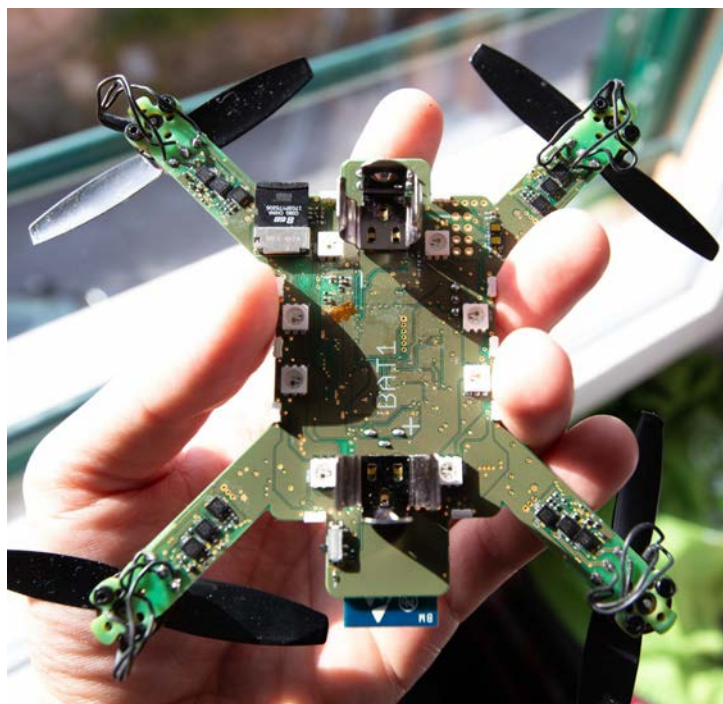
Bosch **IMU**
High precision **barometer**
WiFi telemetry



On board
rangefinder



Esc telemetry with individual motor RPM and current



plug-in **RC Radio**

Future Software development

Refine integration of UWB localization library and disclose to ArduPilot community

Use ExtNav and EKF3

UWB localization system tools

More Position Controller tuning

Other indoor/tiny-drones oriented improvements

Future Hardware development

ArduBee pluggable add-ons:

- Avoidance (8 rangefinders)
- Micro-camera
- Optical flow
- GPS
- Propeller guards
- ... (requests?)



If you're interested

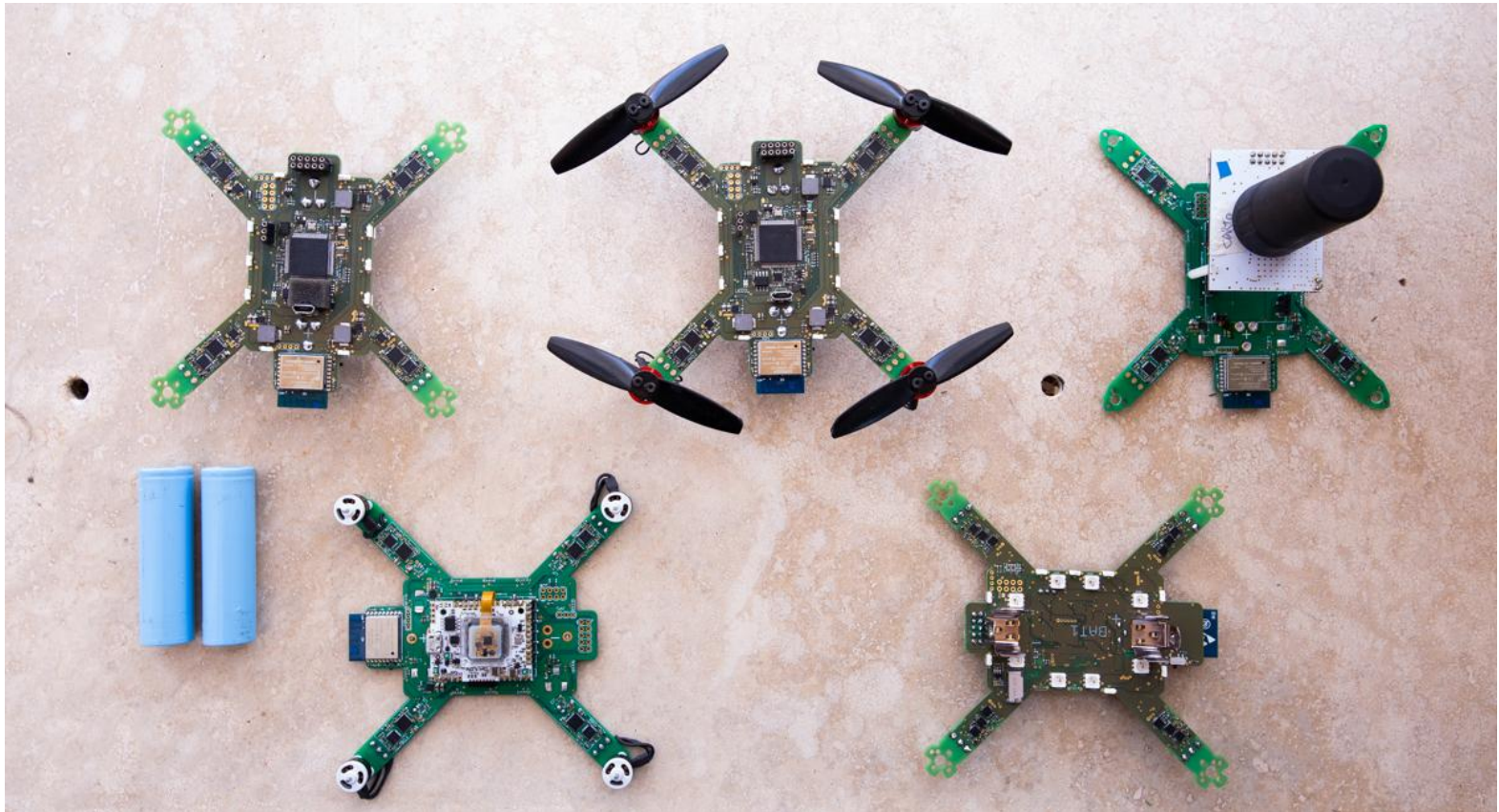


Kickstarter launching soon

We need your support
to bring ArduBee to life

<https://forms.gle/9koNbFMUFvGsoNCSA>

Thanks!



Contact us at luminousbees@gmail.com
More on www.luminousbees.it